



## REGIONAL SPECIALISED METEOROLOGICAL CENTRE -TROPICAL CYCLONES, NEW DELHI TROPICAL WEATHER OUTLOOK

**DEMS-RSMC TROPICAL CYCLONES NEW DELHI DATED 21.08.2025**

**TROPICAL WEATHER OUTLOOK FOR THE NORTH INDIAN OCEAN (THE BAY OF BENGAL AND THE ARABIAN SEA) VALID FOR THE NEXT 168 HOURS ISSUED AT 0600 UTC OF 21.08.2025 BASED ON 0300 UTC OF 21.08.2025.**

### **BAY OF BENGAL:**

A fresh upper air cyclonic circulation formed over northwest Bay of Bengal & adjoining areas of north Odisha and Gangetic West Bengal at 0000 UTC. It moved inland and lay over north Odisha and adjoining Gangetic West Bengal at 5.8 km above mean sea level at 0300 UTC of today, the 21<sup>st</sup> August.

Scattered to broken low and medium clouds with embedded intense to very intense convection lay over north Bay of Bengal. Scattered low and medium clouds with embedded moderate to intense convection lay over central & south Bay of Bengal and Andaman Sea.

### **\*PROBABILITY OF CYCLOGENESIS (FORMATION OF DEPRESSION) DURING NEXT 168 HRS:**

24 HOURS	24-48 HOURS	48-72 HOURS	72-96 HOURS	96-120 HOURS	120-144 HOURS	144-168 HOURS
NIL	NIL	NIL	NIL	NIL	NIL	NIL

**\*NOTE: EVERY 24HR FORECAST IS VALID UPTO 0300 UTC (0830 IST) OF NEXT DAY**

### **ARABIAN SEA:**

Yesterday's upper air cyclonic circulation over northeast Arabian Sea & adjoining Gujarat moved inland and lay over Kutch & neighbourhood at 0300 UTC of today, the 21<sup>st</sup> August.

Scattered to broken low and medium clouds with embedded moderate to intense convection lay over north Arabian Sea, Gulf of Kutch, Gulf of Cambay and central Arabian Sea. Scattered low and medium clouds with embedded isolated weak to moderate convection lay over south Arabian Sea, Lakshadweep Islands area.

### **\*PROBABILITY OF CYCLOGENESIS (FORMATION OF DEPRESSION) DURING NEXT 168 HRS:**

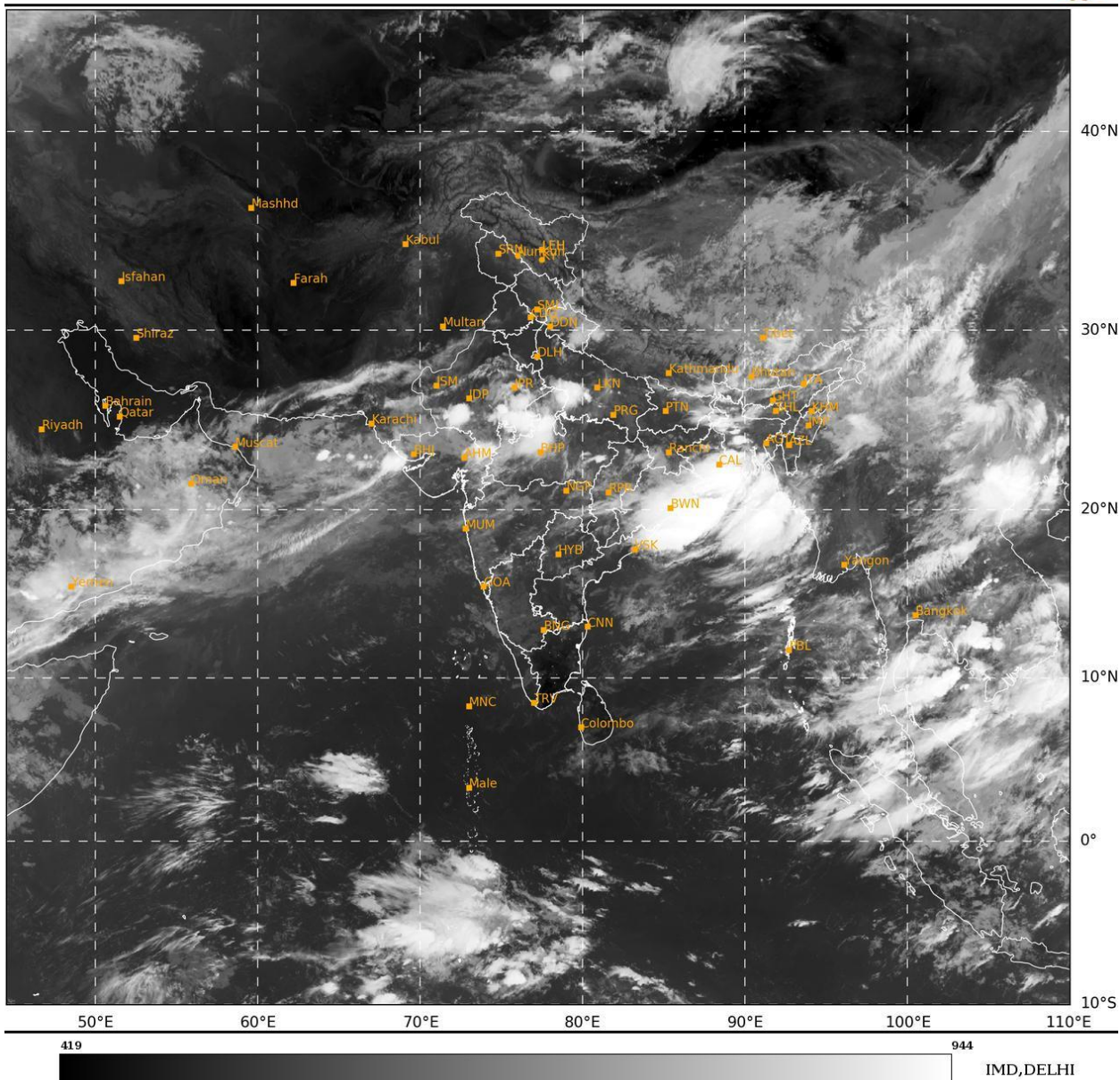
24 HOURS	24-48 HOURS	48-72 HOURS	72-96 HOURS	96-120 HOURS	120-144 HOURS	144-168 HOURS
NIL	NIL	NIL	NIL	NIL	NIL	NIL

**\*NOTE: EVERY 24HR FORECAST IS VALID UPTO 0300 UTC (0830 IST) OF NEXT DAY**

**REMARKS:** NIL

SAT : INSAT-3DR IMG  
 IMG\_TIR1 10.8 um  
 LIC Mercator

21-08-2025/(0315 to 0342) GMT  
 21-08-2025/(0845 to 0912) IST



Cloud distribution: (a) Isolated: <25%, Scattered:25-50%, Broken: 51-75%, Solid:>75%, Convection Intensity: (a) Weak: Cloud Top Temperature(CTT)>-25°C,(b)Moderate:CTT:-25°Cto-40°C,(c)Intense:CTT: -41°Cto -70°Cand(d)Very Intense::Less than -70°C  
 PROBABILITYOFCYCLOGENESIS(FORMATIONOFDEPRESSION):NIL:0%,LOW:1-33%,MODERATE:34-66%ANDHIGH:67-100%  
 ThisisaguidanceBulletinforWMO/ESCAPPanelMembercountries.VisitrespectiveNationalwebsitesforCountryspecificBulletins